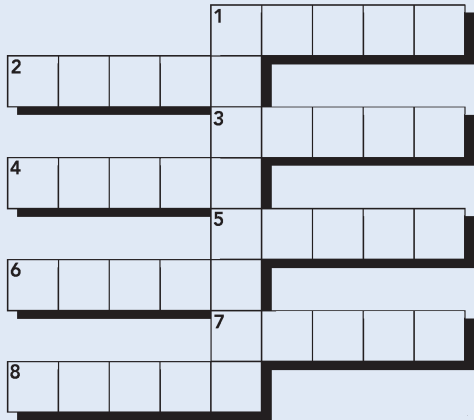


JUNIOR CROSSWORD

Solve all the clues and an eight-letter word will be spelled out



- 1 Spirit of the dead
- 2 Enclosed sports ground
- 3 A person shaves with this
- 4 If you do well, you may get an -
- 5 Arm joint
- 6 Another word for twelve
- 7 Soil
- 8 Madagascan primate

ANSWER: Ghost, arena, razor, award, elbow, dozen, earth, lemur (Gardener)

4X4

1	2	3	4
5			
6			
7			

ACROSS

- 1 Legume (4)
- 5 Skilful (4)
- 6 S.E Asian country (4)
- 7 Peepers (4)

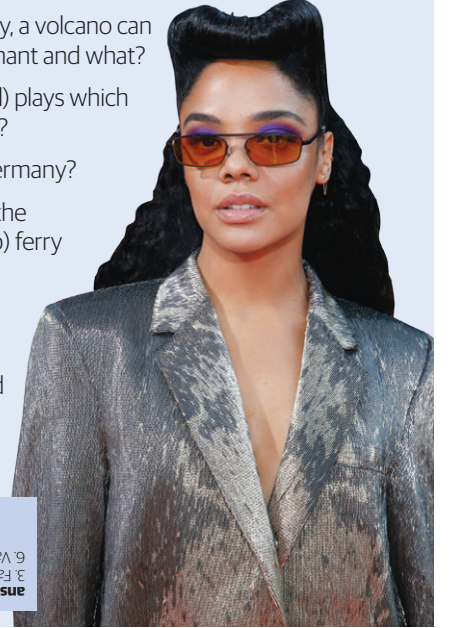
DOWN

- 1 Bundle (4)
- 2 Web auction site (4)
- 3 Drug-yielding plant (4)
- 4 Famous Scottish loch (4)

ANSWER: ACROSS: 1. Bean, 5. Able, 6. Laos, 7. Eyes. DOWN: 1. Bale, 2. Ebay, 3. Aloe, 4. Ness.

KIDS' QUIZ

- What is the name of our galaxy?
- Dav Pilkey is the writer and illustrator of which comical series of novel starring George Beard and Harold Hutchins?
- True or false: an animal which walks on two legs is called a quadruped?
- Who is the leader of the Teen Titans?
- In terms of geological activity, a volcano can be described as active, dormant and what?
- Tessa Thompson (**pictured**) plays which character in *Thor: Ragnarok*?
- What is the capital city of Germany?
- Does a locomotive provide the motive power for a (a) car (b) ferry or (c) train?
- Mixing blue and yellow creates what colour?
- What type of bird is pictured on a box of Froot Loops cereal?



ANSWER: 1. Milky Way 2. Captain Underpants 3. False, it is called bipedal 4. Robin 5. Extinct 6. Valkyrie 7. Berlin 8. (c) train 9. Green 10. Toucan

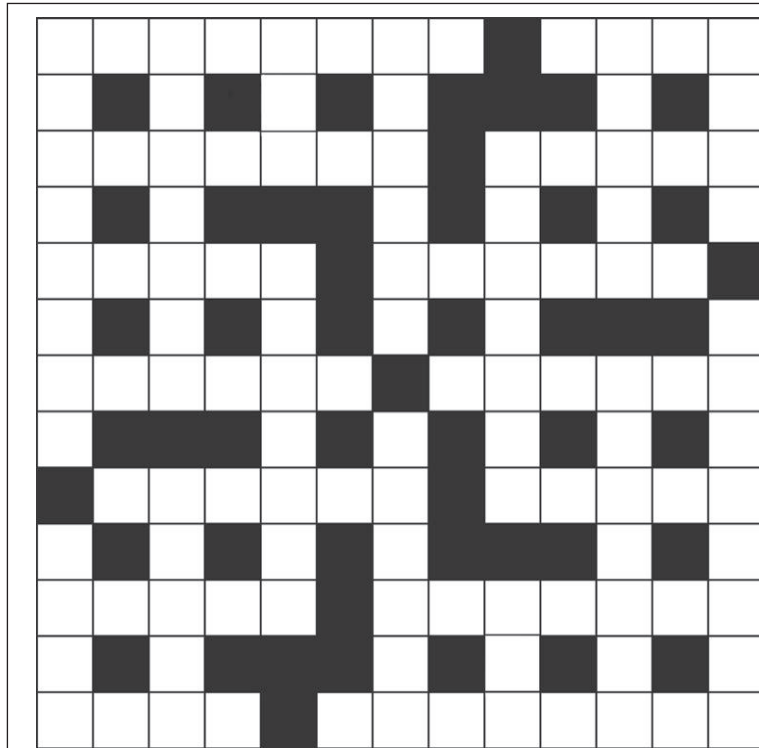
WORD STEP

Complete the list by changing one letter at a time to create a new word at each step. One possible answer shown below.

C R E A M

F L O C K

ANSWER: CREAM, CREAM, CROAK, CROCK, FROCK, FLOCK



WORD FILL

3 LETTERS

MEW
SAP

4 LETTERS

STEP
LYRE
PATH
OPAL

5 LETTERS

FAINT
MAILS
LEMON
PLANE
TWICE
CHAIR

6 LETTERS

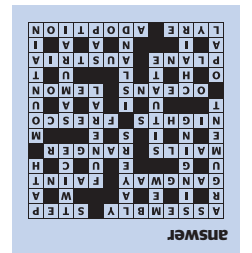
RANGER
NIGHTS
FRESCO
OCEANS
LAYERS
ISLAND

7 LETTERS

GANGWAY
AUSTRIA
SINGING
FUNERAL
SITUATE
SAMURAI

8 LETTERS

ASSEMBLY
ADOPTION
ARGUMENT
MOUNTAIN



WORD FIND

Find the following:

M	L	B	L	C	E	A	B	F	D	L
O	U	L	A	D	U	A	R	R	O	C
G	E	I	A	L	T	B	A	E	H	H
C	A	C	R	H	L	Y	I	A	A	I
Y	R	L	R	O	T	R	M	C	L	M
A	R	O	L	R	T	B	O	A	L	N
D	O	A	U	E	E	I	U	O	M	E
M	E	O	R	R	R	N	D	Y	M	Y
R	C	N	P	B	D	Y	G	U	L	A
F	L	O	O	R	I	N	I	B	A	C
D	R	A	Y	T	E	L	I	O	T	N

- ARCADE
- AREA
- AUDITORIUM
- BALLROOM
- BATHROOM
- CABIN
- CELL
- CHAMBER
- CHIMNEY
- COURTYARD
- CUBICLE
- DEN
- FLOOR
- GALLERY
- GYM
- HALL
- LAUNDRY
- LIBRARY
- TOILET
- YARD

The leftover letters will spell out a secret message

Secret message: Floorplan

EASY SUDOKU

	4	2	8					1
8					9	3	2	
9		1	6	2				
				6			4	
4				8				3
	8			3				
				4	6	9		7
	7	6	5					2
1					2	6	8	

Sudoku is an 81-square number grid with nine blocks each containing nine cells. To solve the puzzle, all the blank cells must be filled in using numbers from 1 to 9. Each number can only appear once in each row, column and in the nine 3x3 blocks. You can successfully solve the puzzle just by using logic and the process of elimination.

ANSWER

6	4	2	8	5	3	7	9	1
8	7	6	5	9	8	4	1	2
9	5	1	6	2	7	3	4	8
3	8	9	4	6	5	2	7	1
4	6	9	2	8	3	7	1	5
7	1	3	9	6	8	5	2	4
8	5	7	4	1	9	3	2	6
9	3	1	6	2	7	8	5	4
6	4	2	8	5	3	7	9	1